

# Linked conditions

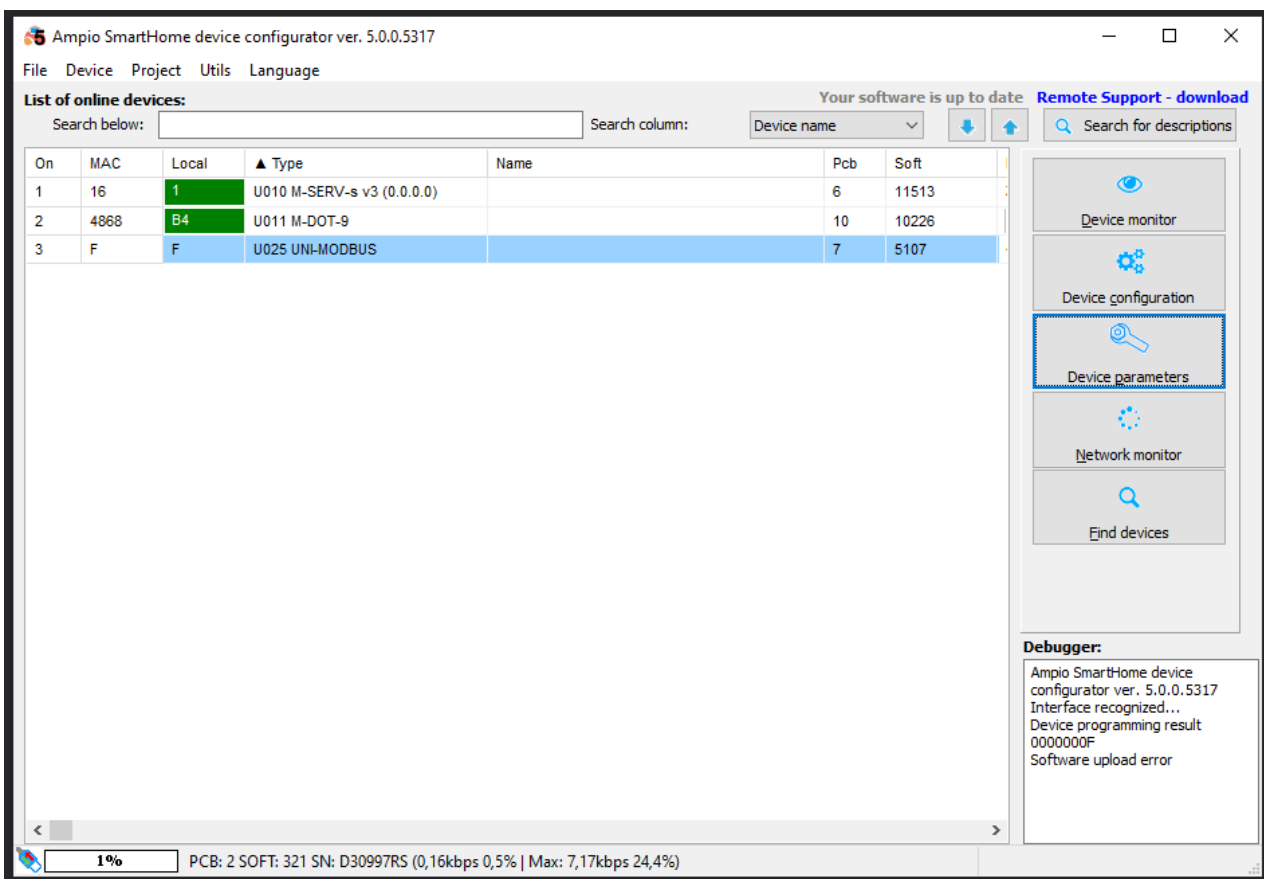
Document number: PO-082-EN Version: 1.0 Date of publication: April 13, 2022

## Introduction

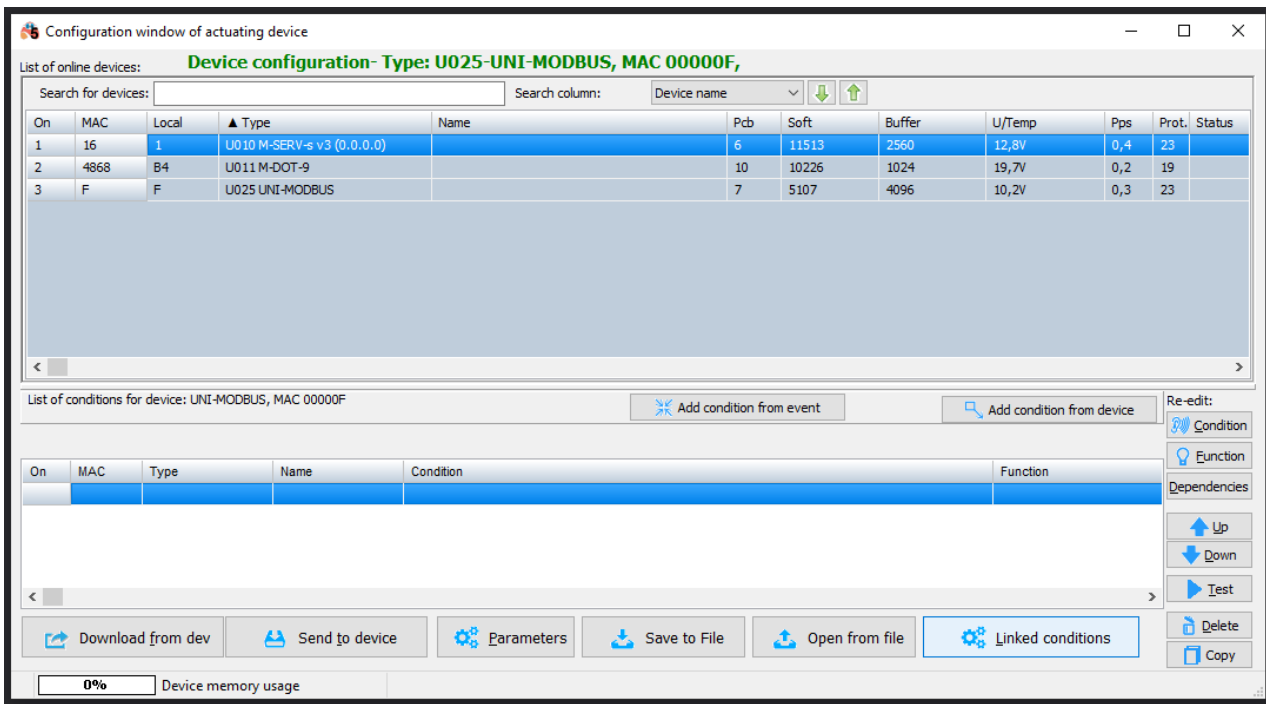
In order to create a condition that is dependent on more than just one module, you have two options: one is to use flags, and the other one is to use linked conditions, which is a new addition in version 5.0 of the Ampio Smart Home configurator.

## Configuration

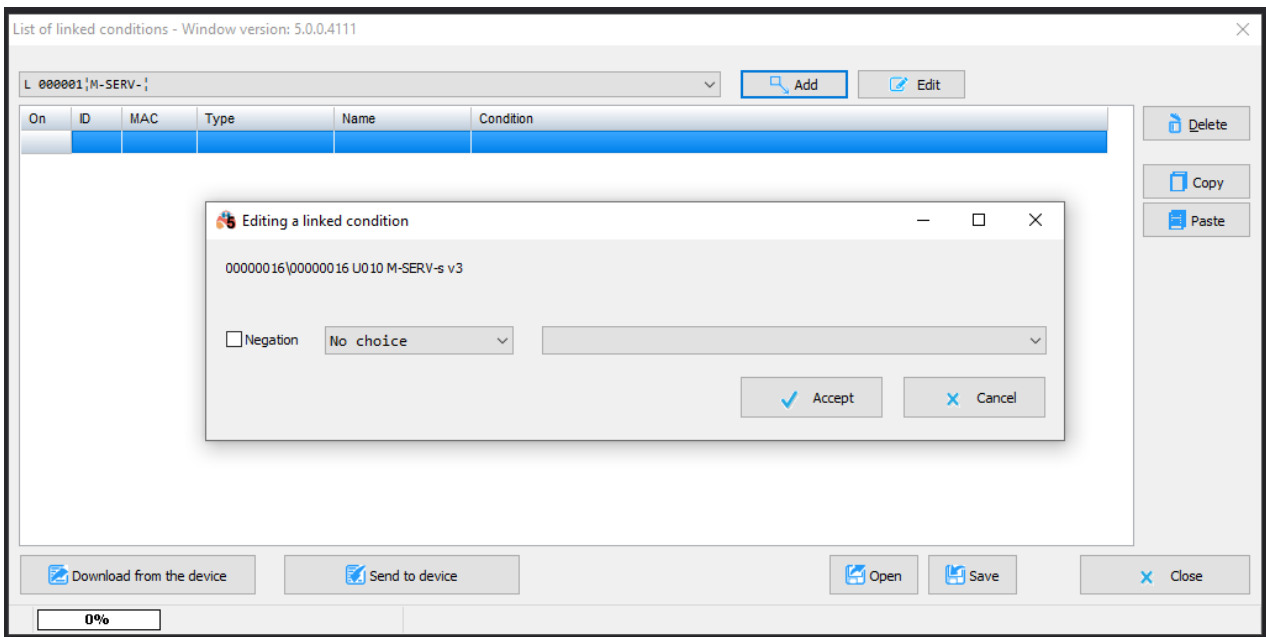
From the list of devices, select a device that you want to control and open the *Device configurator*.



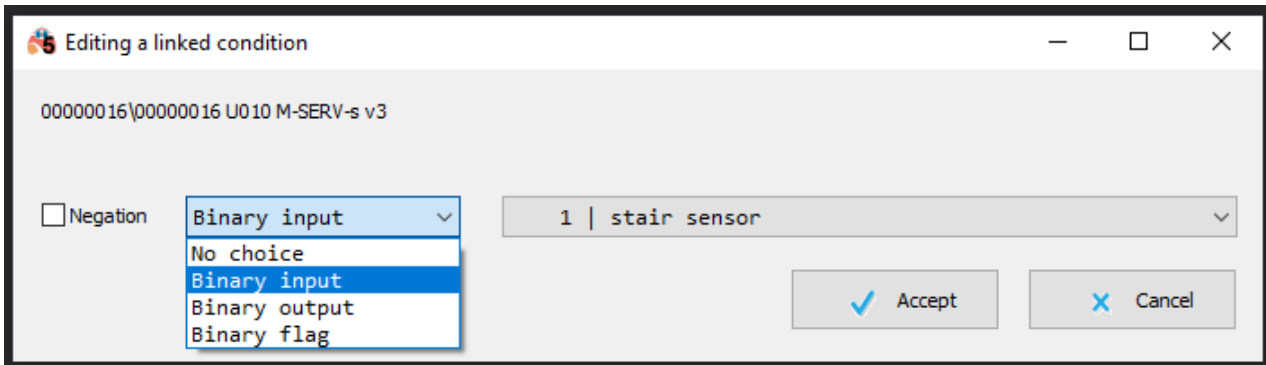
Then, open *Linked conditions*.



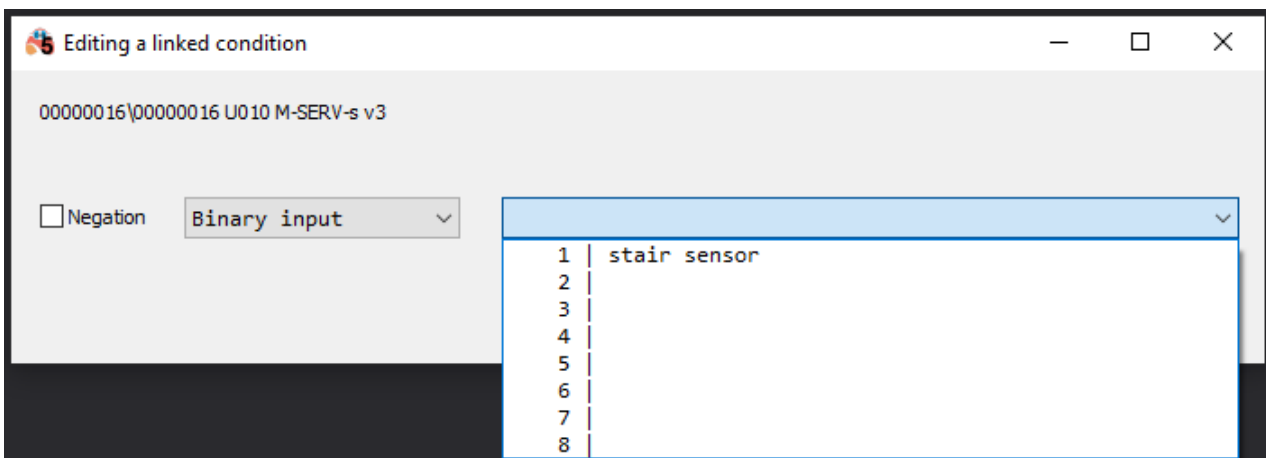
From the dropdown list on top, select the module that will serve as an additional source in your condition and click *Add*.



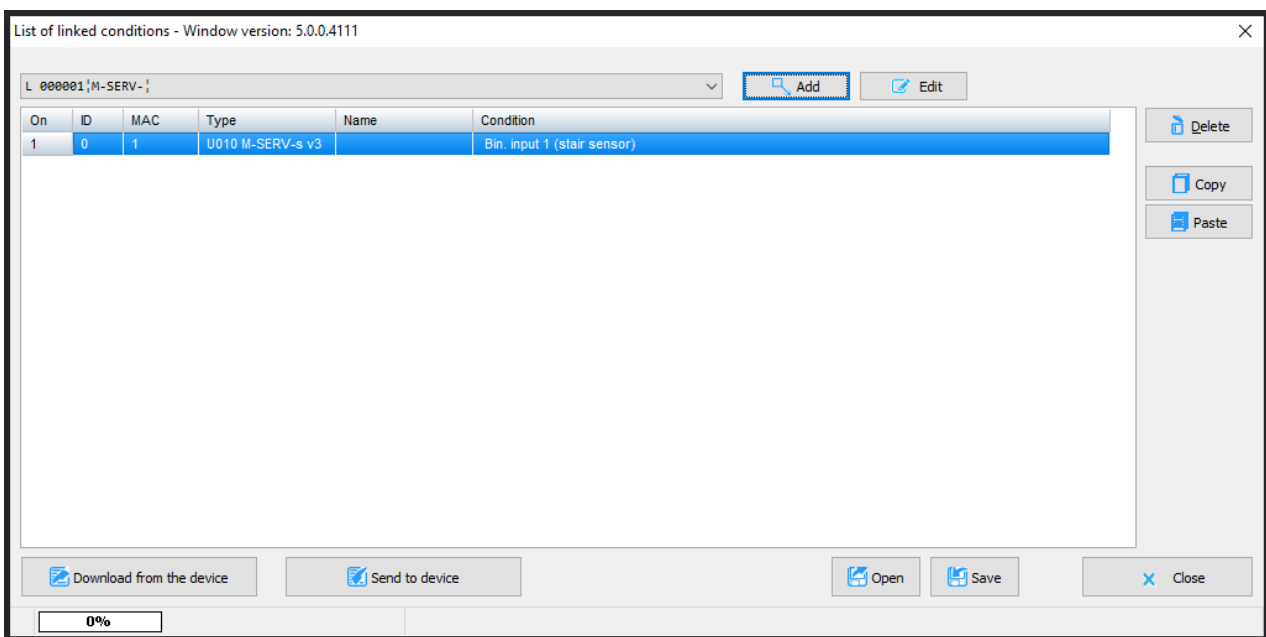
Next, choose the source type (from what information will the condition be created).



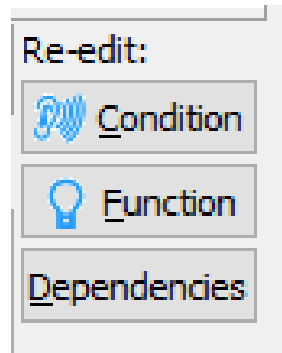
Select a number (e.g. input or flag number) and, optionally, tick whether the information should be negated. Then click *Accept*.



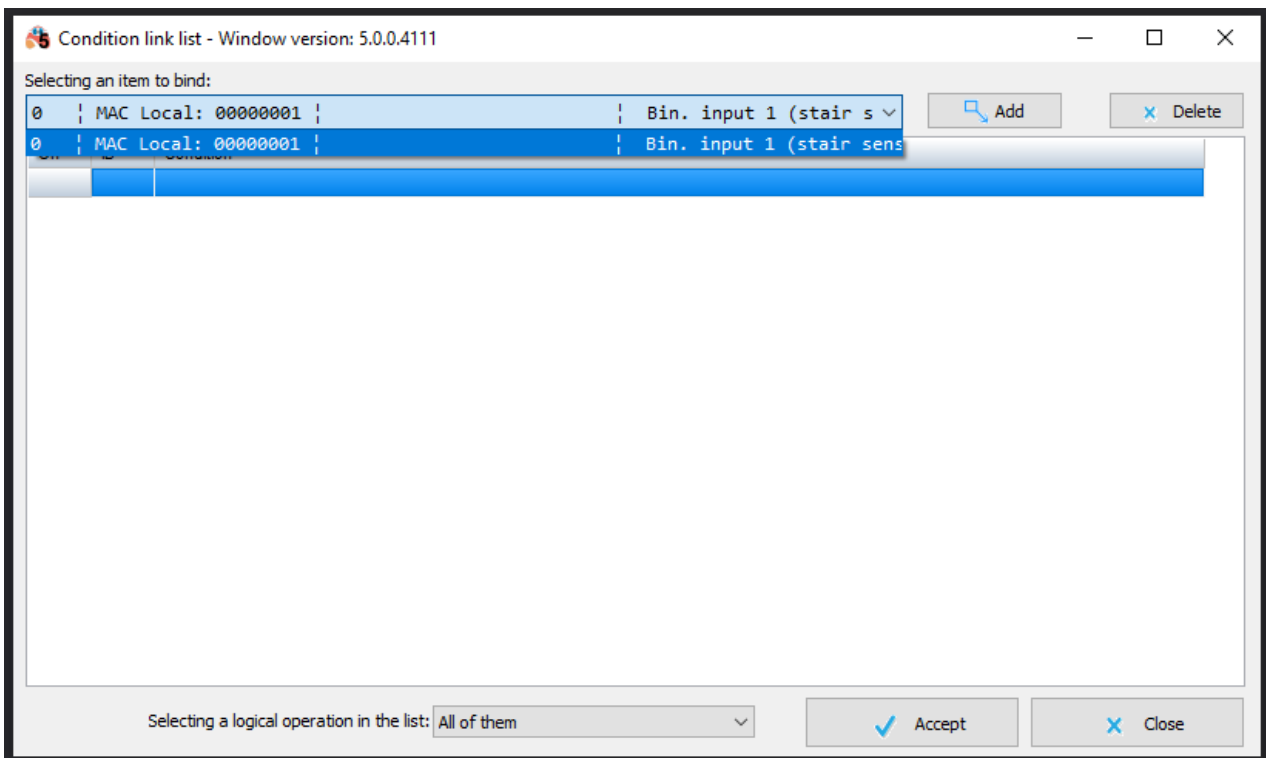
Once all linked conditions are established, click *Send to device*.



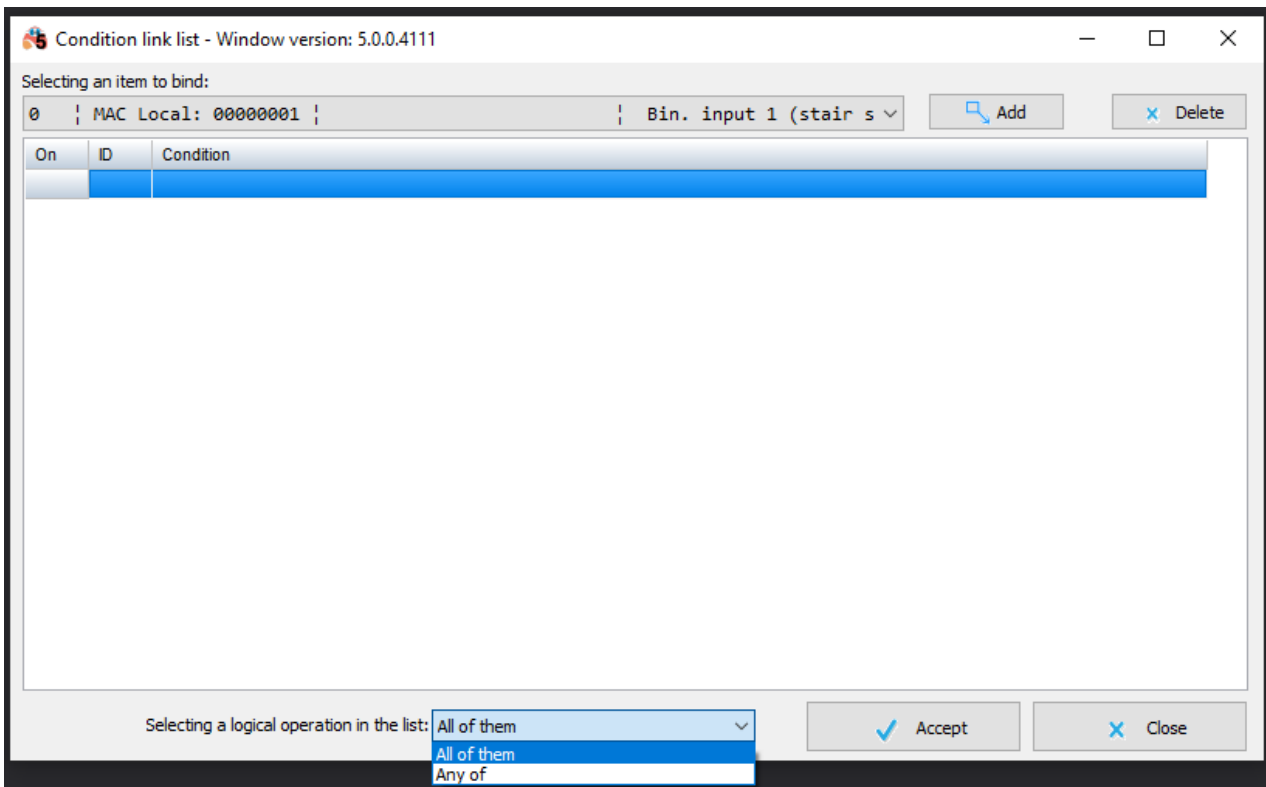
After creating a regular condition in the configurator, go to *Dependencies*.



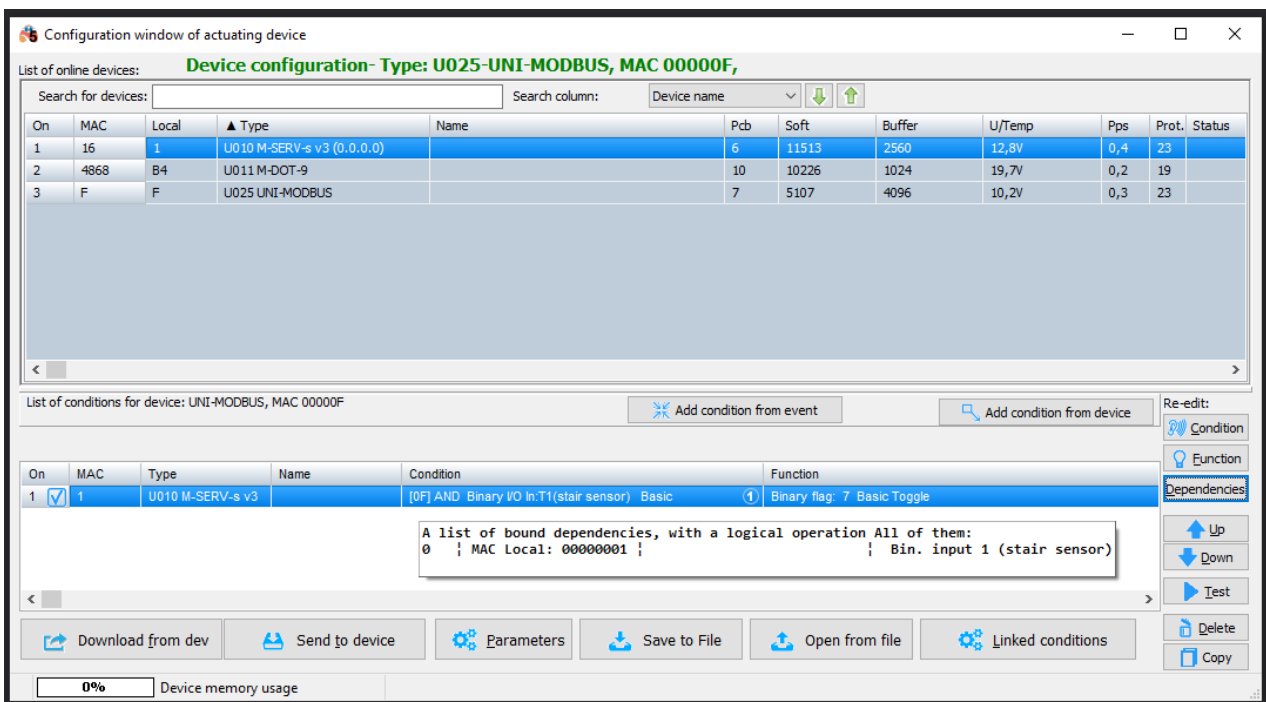
Select a dependency from the list and click *Add*.



For all the dependencies, you can also choose options *All of them* (AND) or *Any of* (OR), and confirm by clicking *Accept*.



In the conditions window you will then see a condition with a circles number, which stands for the number of dependencies.



The condition must, naturally, be sent to the device. From now on, for the condition to be met, linked information must also be active.

The logic saved in Dependencies must be activated first, if you want the condition to be performed immediately. Otherwise, it can be performed even with a couple of seconds' delay. Only when the Dependency is Active (logical status 1), will the logic of the main condition be checked.