

# Lighting control - cascading effect

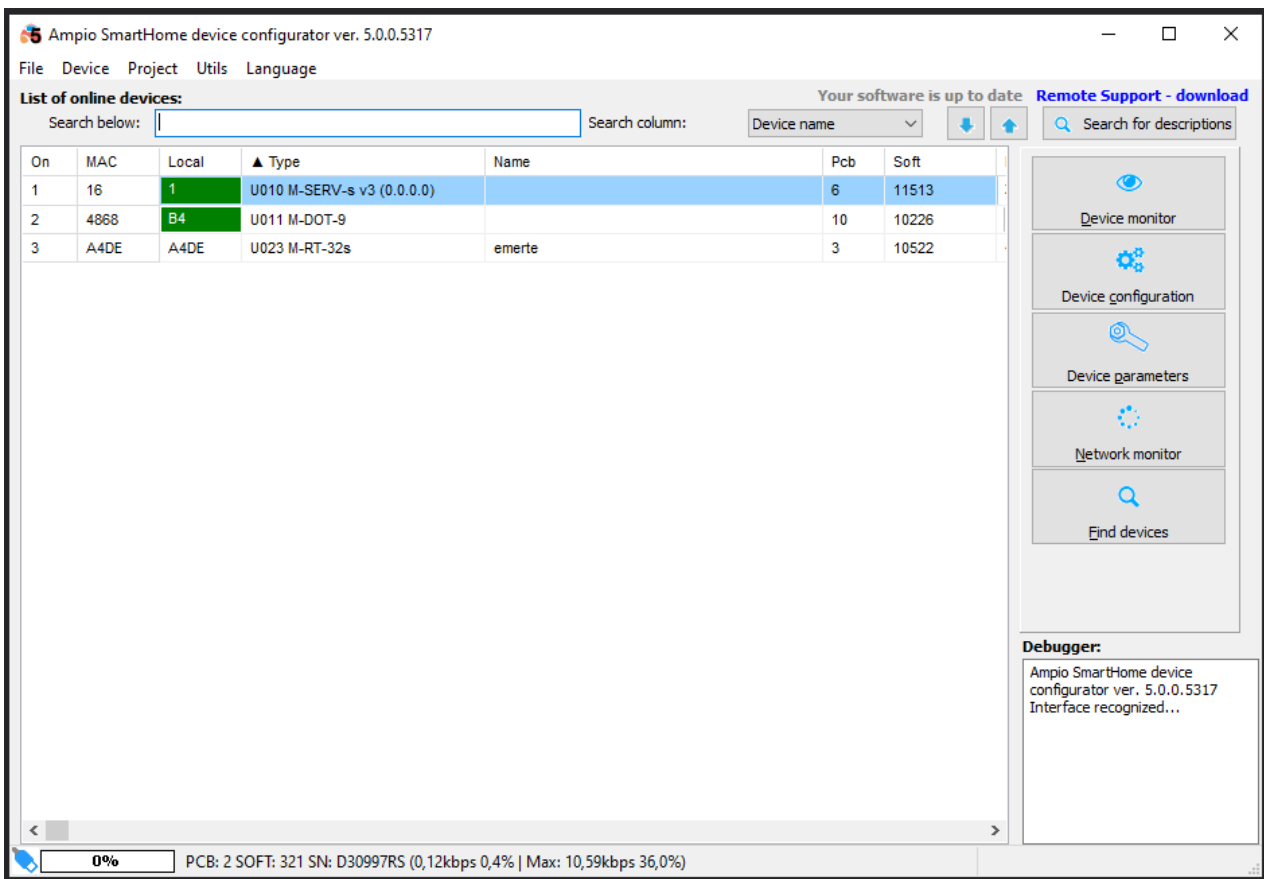
Document number: PO-087-EN Version: 1.0 Date of publication: April 13, 2022

## Introduction

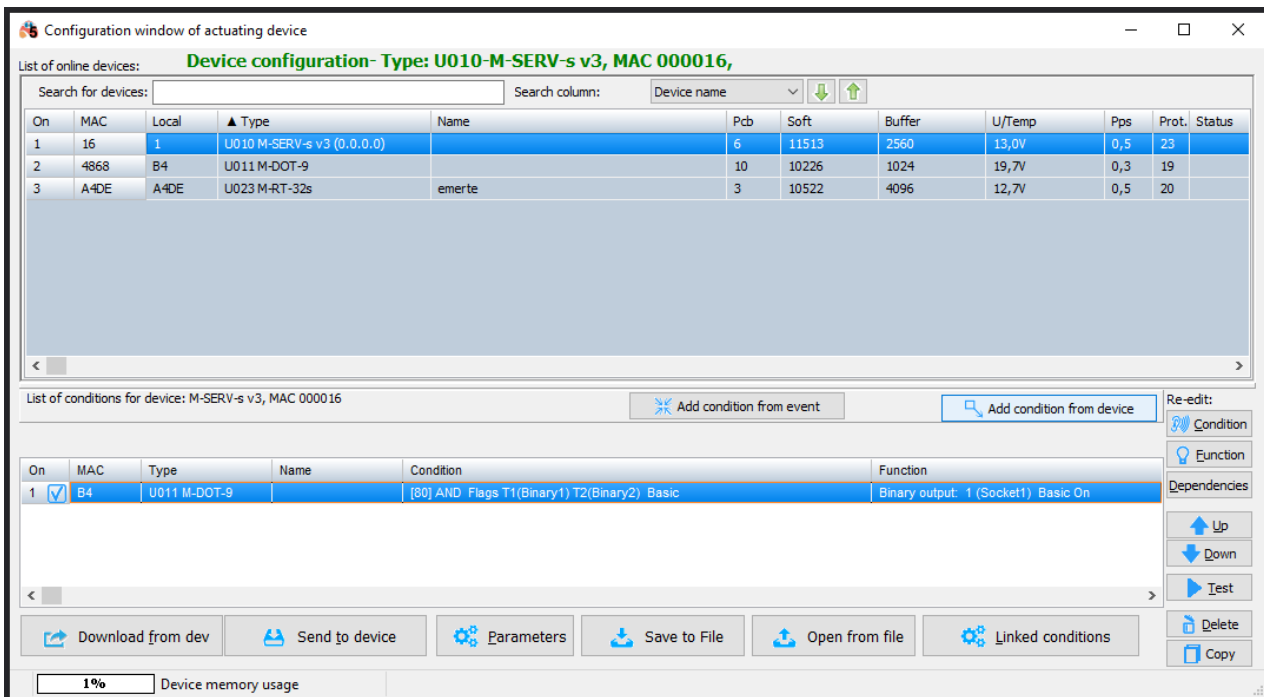
In the Ampio system, there is a possibility of configuring outputs in such a way that they get activated one after another, in a so-called stair effect. In order to do that, a module with a couple of outputs is required.

## Configuration

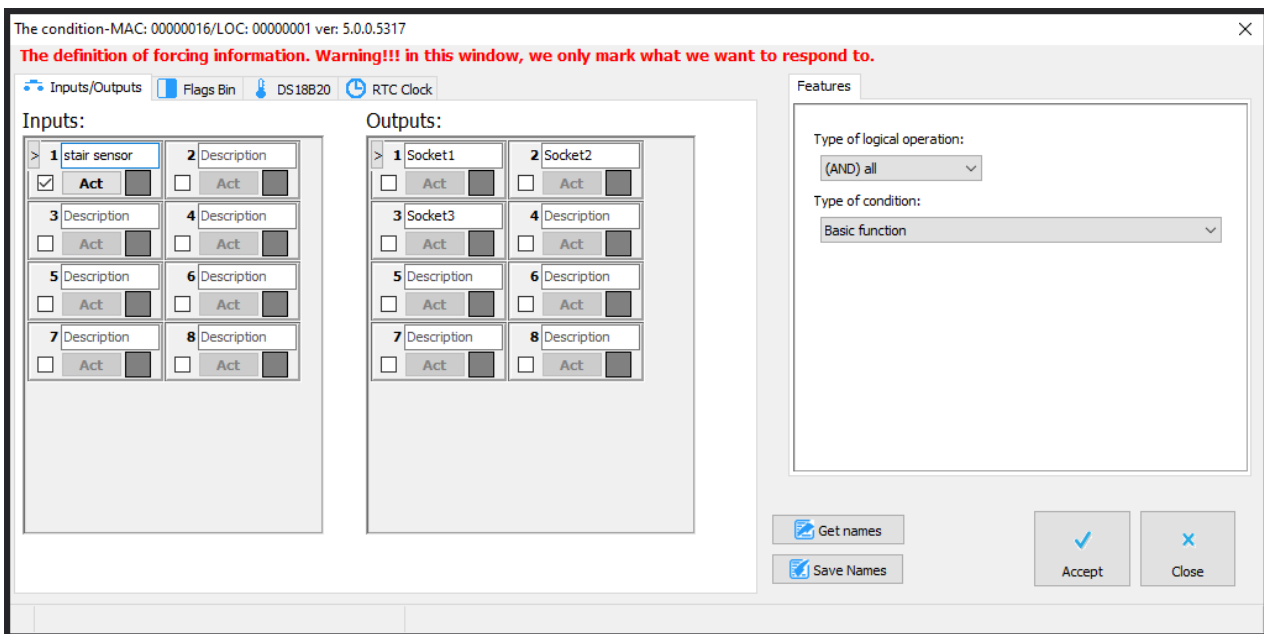
First, select an output device to control (here, M-SERV-s) and go to *Device configurator*.



From the menu, choose an input device that will manage the operation (here, M-SERV-s again) and open *Add condition from device*.

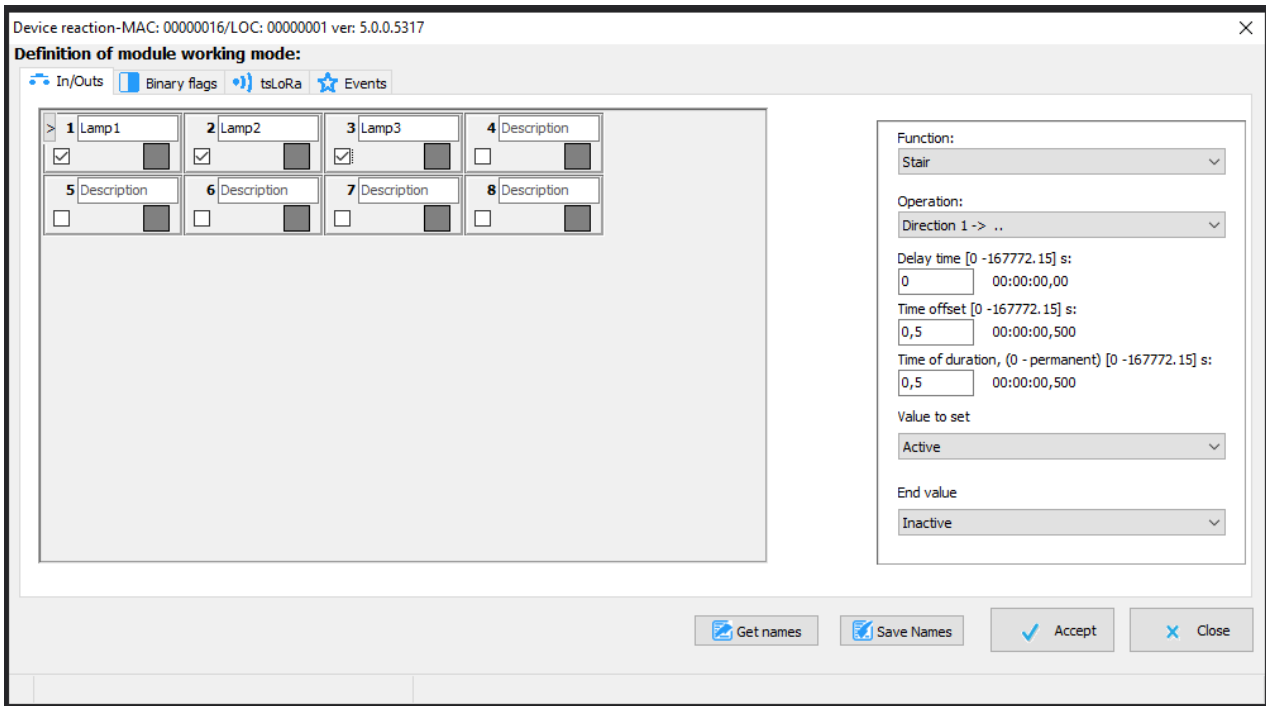


Tick the input to which a sensor is connected, e.g. motion sensor, set the Basic function and confirm.

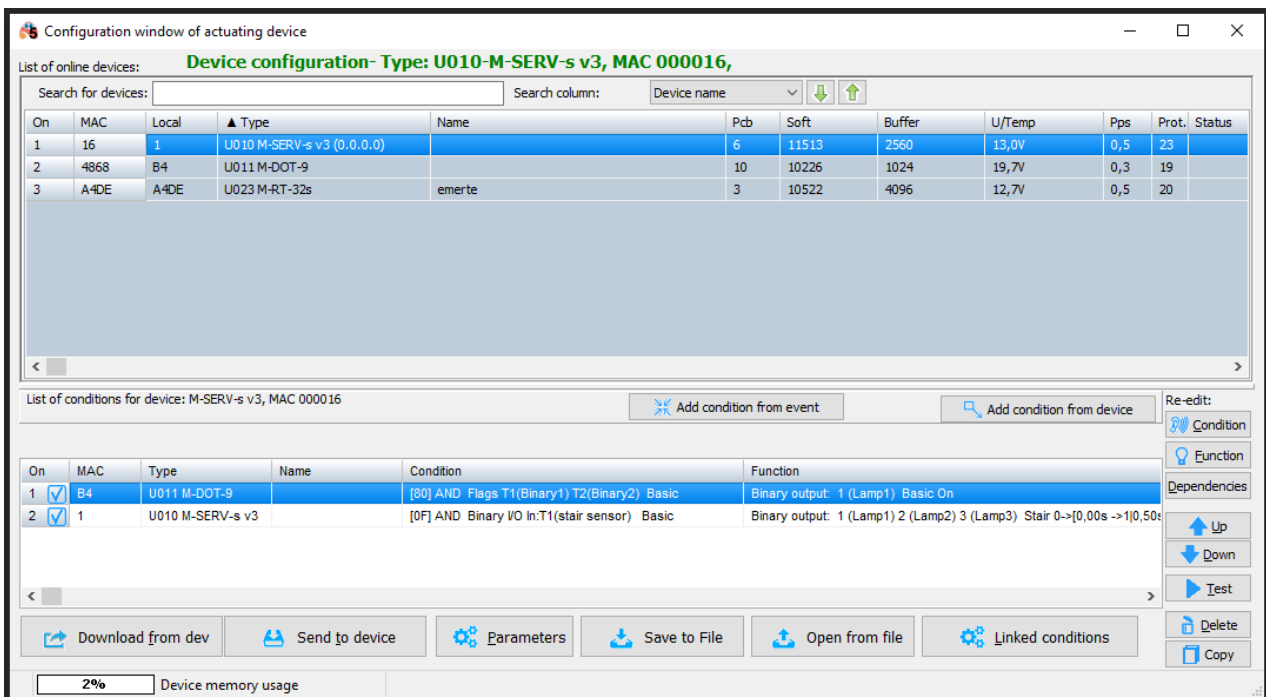


Tick the lamps that you want to control. Select the *stair* function and set the desired parameters:

- operation - direction (from the first or from the last)
- delay time (after what time will the first light turn on)
- offset time (delay between consecutive lights)
- duration time (for how long will the lights be on)
- values (switching the lights on or off)



Confirm and send a new condition to the device.



From now on the lights will be switched on in a cascading fashion after the motion sensor gets activated.