

# Objects - configuration in the Smart Home Manager

Document number: PO-080-EN Version: 3.1 Date of publication: January 10, 2023

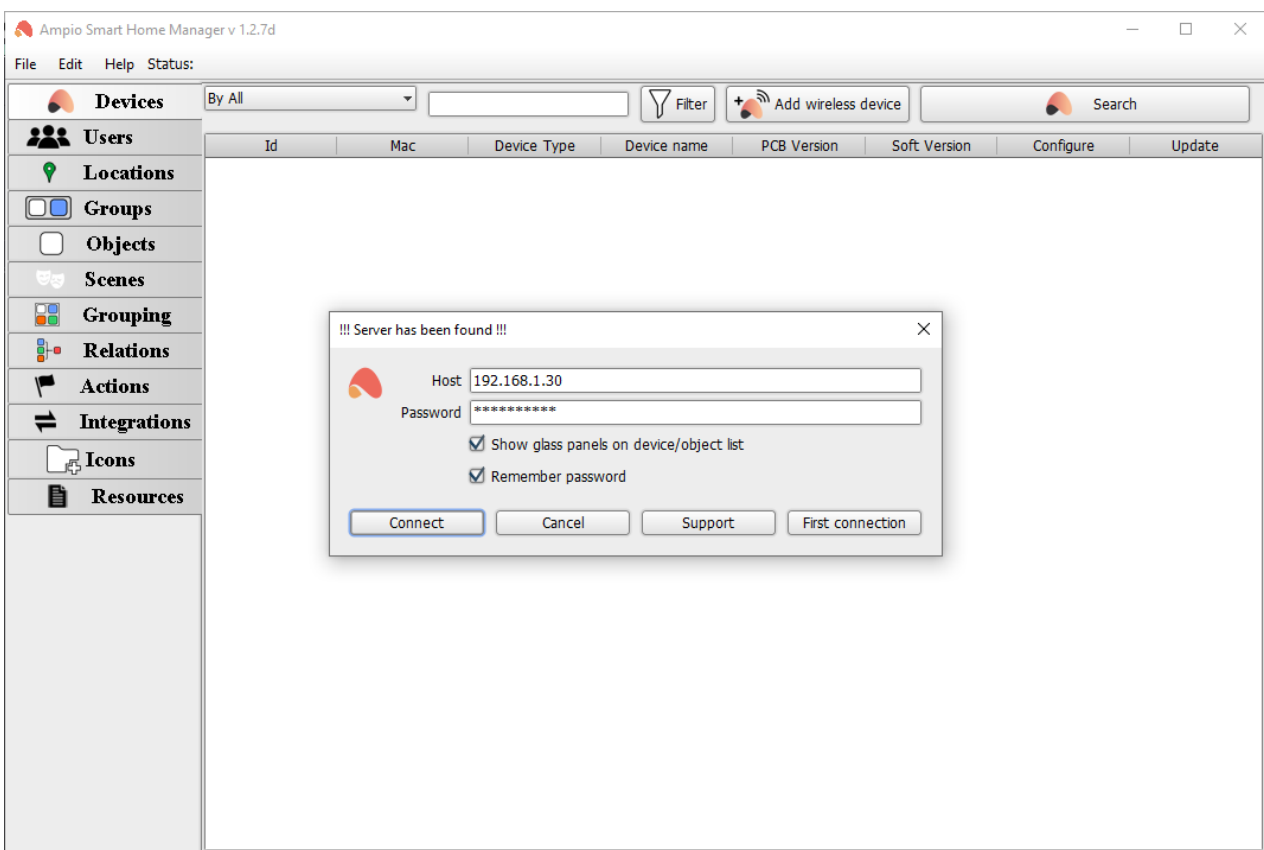
## Introduction

Basic elements used in the Ampio UNI application are called *objects*. Objects are configured in the Smart Home Manager application. There are various ways of setting objects up, grouping them or creating connections.

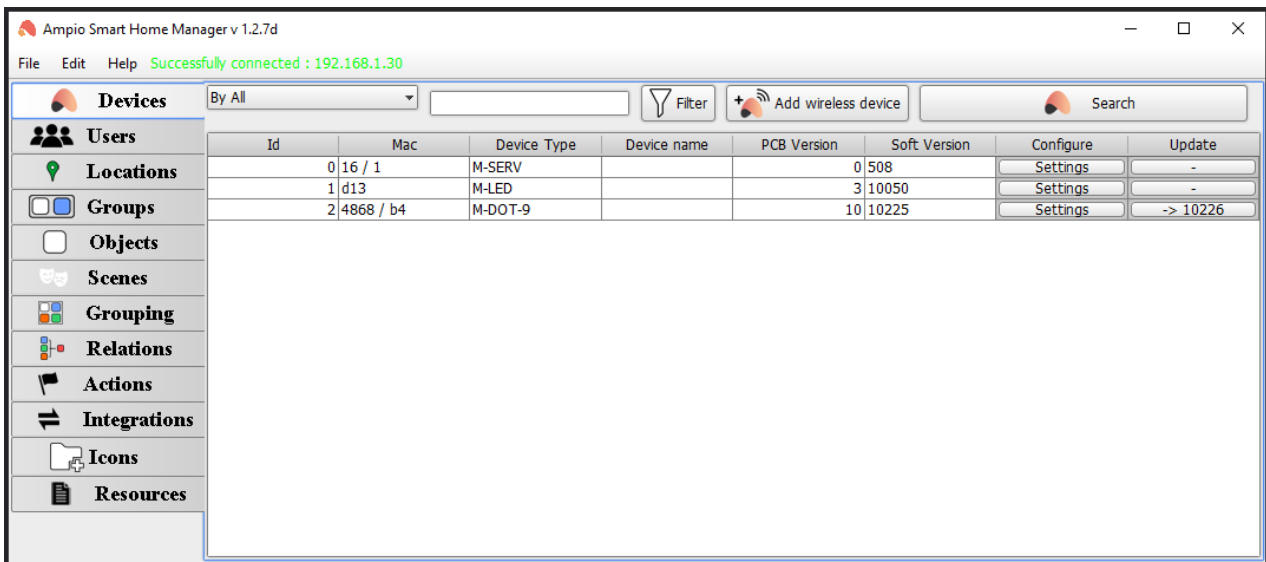
## Ampio Smart Home Manager

In order to log into the Smart Home Manager application, you have to know the server's administrator password and the IP address. If the server is new, you can find the *M-SERV server configuration guide* helpful.

The server's IP address is automatically discovered in a local network. In other instances, you will have to enter it manually. If the server has never been connected to the Smart Home Manager application before, select *First connection*.

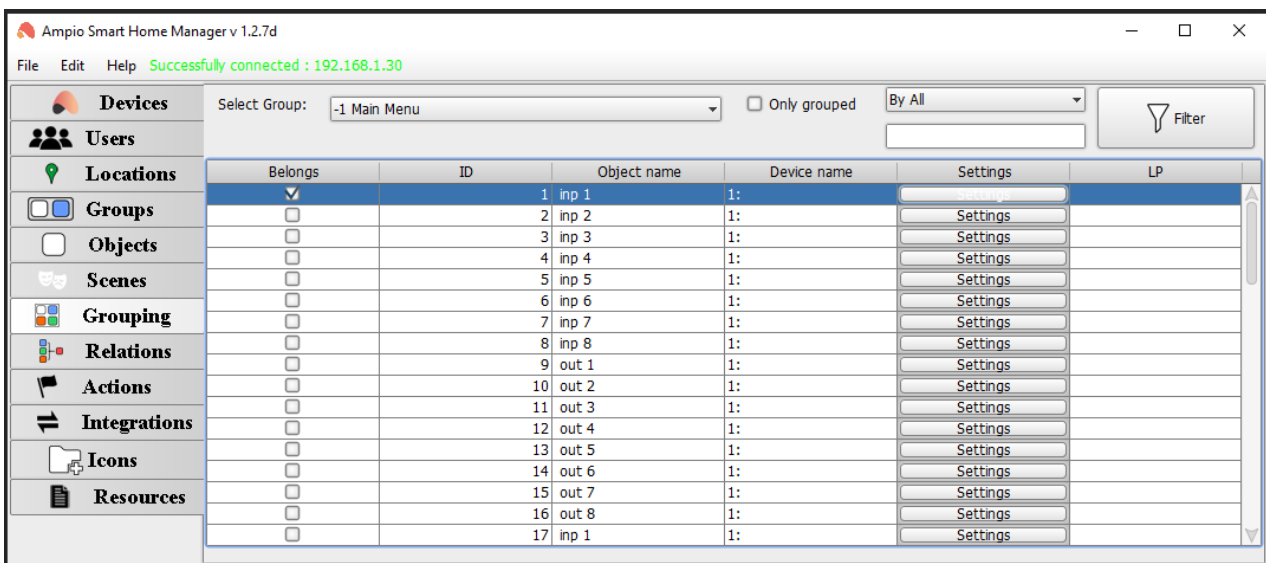


After logging in, you will see a list of devices.

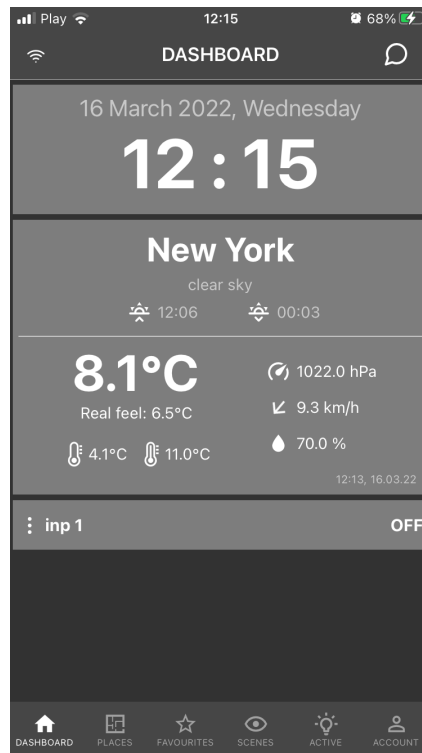


## Grouping objects to display in the Ampio UNI app

To display an object in the mobile app, you have to assign it to a group in the *Grouping* tab by ticking the box in the *Belongs* column and choosing the desired group from a drop-down list (*Select group*). In this tab, you can also filter or sort objects to find them easier. After selecting the objects, save their settings on the server using the *Ctrl+s* shortcut, or by going to *Edit -> Save configuration on the server*.

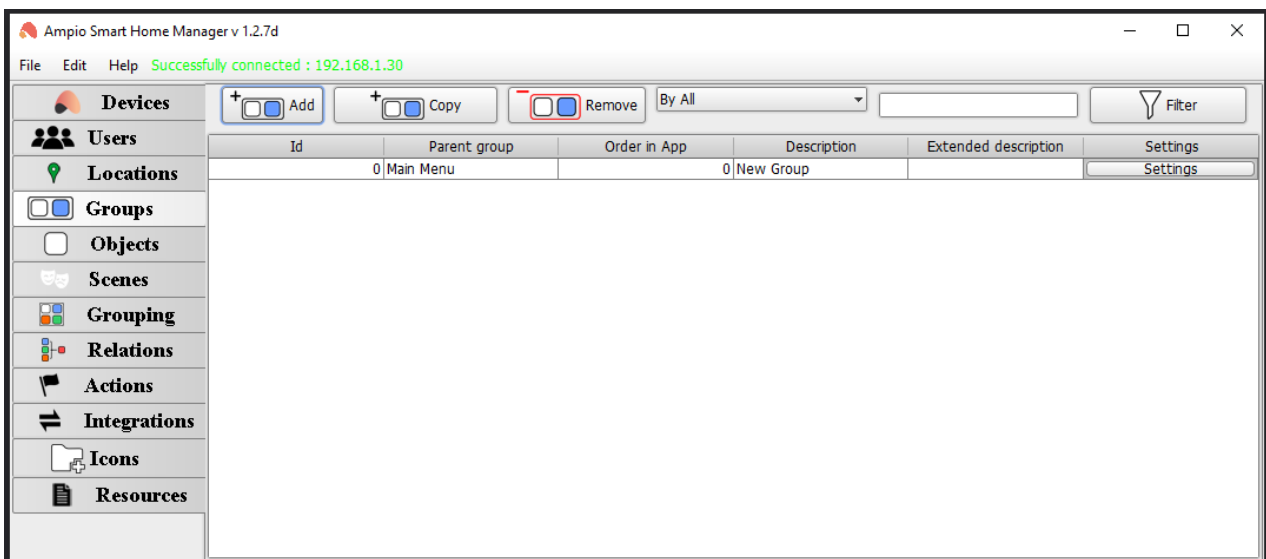


From now on, the object will be visible in the mobile app.



## Adding a new group

If you wish to have more groups displayed in the app, you can add new groups in the *Groups* tab. You can define the new group's name in the *Description* field. In order to change e.g. the icon or the group's access settings, go to *Settings*.



## Adding a new object


Apart from automatically generated objects, you can also add your own objects and configure them accordingly. In order to do that, go to the *Objects* tab.


Id	Device	Description	Turn on time[x1...	Number	Component type	Settings
1	1:	inp 1	0	1	Input	Settings
2	1:	inp 2	0	2	Input	Settings
3	1:	inp 3	0	3	Input	Settings
4	1:	inp 4	0	4	Input	Settings
5	1:	inp 5	0	5	Input	Settings
6	1:	inp 6	0	6	Input	Settings
7	1:	inp 7	0	7	Input	Settings
8	1:	inp 8	0	8	Input	Settings
9	1:	out 1	0	1	Relay	Settings
10	1:	out 2	0	2	Relay	Settings
11	1:	out 3	0	3	Relay	Settings
12	1:	out 4	0	4	Relay	Settings
13	1:	out 5	0	5	Relay	Settings
14	1:	out 6	0	6	Relay	Settings
15	1:	out 7	0	7	Relay	Settings
16	1:	out 8	0	8	Relay	Settings
17	1:	inp 1	0	1	Line input	Settings
18	1:	sens 1	0	1	Sensor	Settings
19	1:	sens 2	0	2	Sensor	Settings

Objects can be added (a new object will appear at the end of the list), deleted and copied. There is also an option of filtering and sorting. In the *Device* column, select the Ampio module that you would like to configure and add a chosen *Description*. *Turn on time* is the time after which the object will be activated, multiplied by 10ms (e.g. entering the value 10 will activate the output after 100ms). The *Number* column represents the number of input/output. Lastly, the *Settings* button provides you with a lot of other options.

**New object**

File

Icon ON 

Icon OFF 

PIN

Object type:

Log every:  seconds ( 0 - data logged when changed)  Show in active devices

Block when local connect  Block when cloud connect  Hide value on sketch icon  Hide title in mobile app

Interpretation   Read only  Home entrance  Show connected as list  Hide menu (3 dots)

Access rights

Id	Name
----	------

Object is deleted

The most significant variable here is choosing the *Object type*. Each type has different options available in *Advanced* section. Below, you can find an example of *Advanced* options for the *Sensor* type.

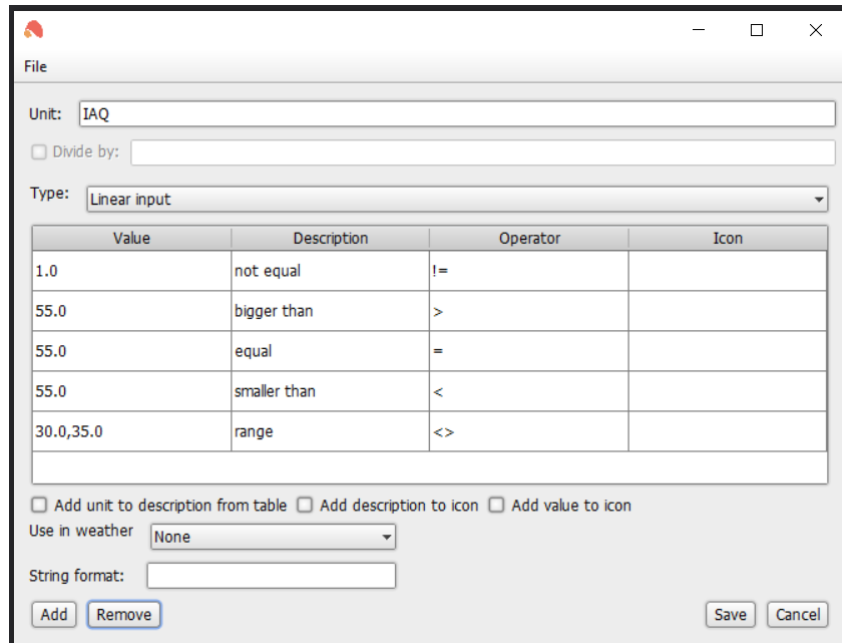
Additionally, selecting specifically a temperature sensor and the option *Divide by 10* will allow you to display temperature with one decimal place in the mobile application.

The field *String format* allows you to set up the value display mode, similarly to the *printf* function of C language. For example, if you want only one decimal place to be displayed, enter *%.1f*. This does not apply to the field *Temperature*, which is predefined.

What you might find useful is also the option of displaying a description instead of a value. For instance, for the IAQ air quality, you can define descriptions such as *Very good*, or *Very poor*. You should create a list of values and pick the appropriate logical conditions. The selection can be done from:

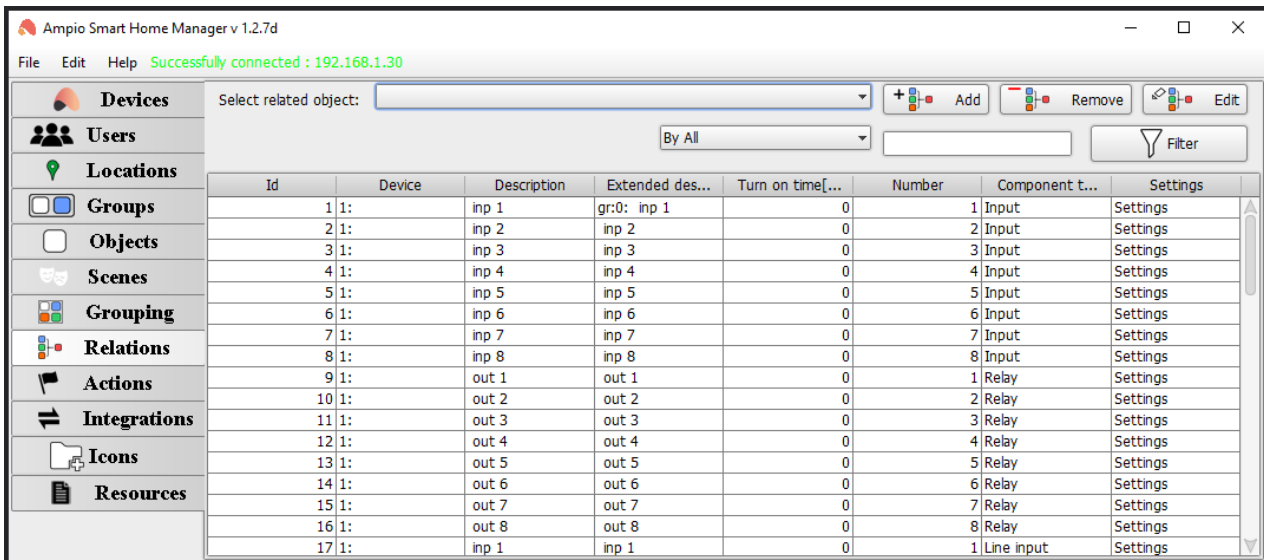
- Greater than >
- Smaller than <
- Equal to =
- Different from !=
- A range <> (enter two threshold values separated by a comma).

If a couple of conditions from the list are met, the last one will be executed.

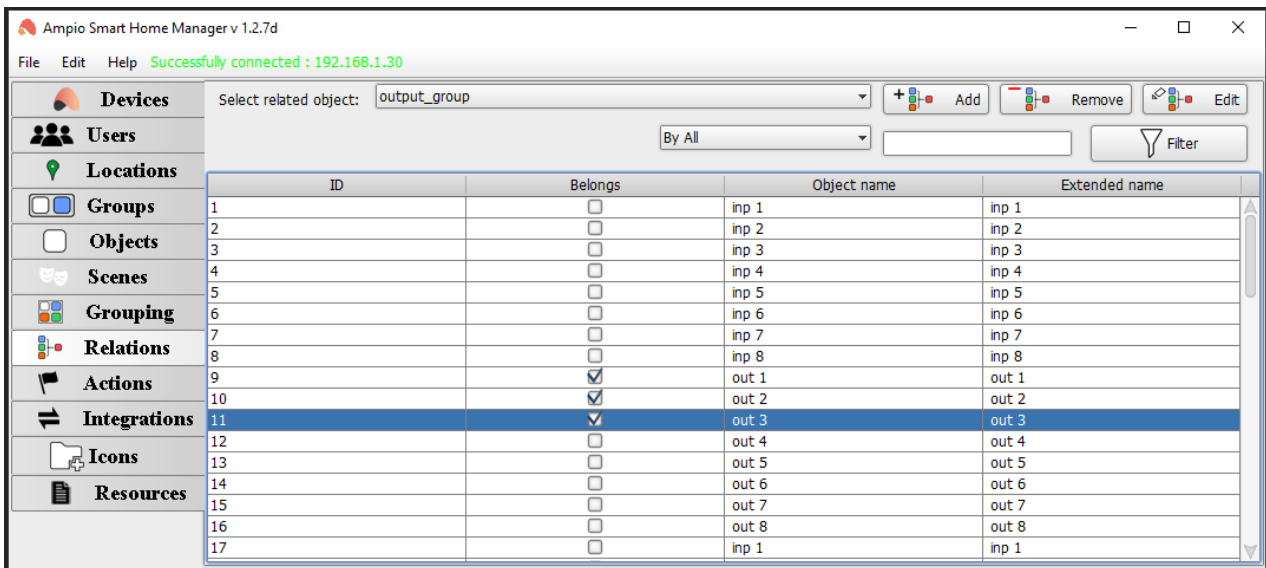


## Connecting objects

There is also a possibility of merging a couple of objects into one. It makes the Ampio UNI app more visually neat and easier to operate.



Create a new connection by clicking on *Add* in the *Relations* tab and adding a name. Then, select which elements should belong to the connection.



It is crucial to submit the object from the *Grouping* tab. From now on, you will be able to control outputs 1,2,3 with one button, as shown below.

